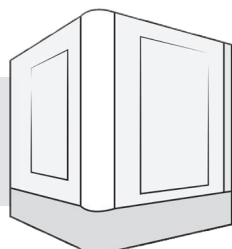




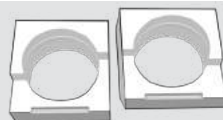
PackshotCompact
QuickStart
INSTALLATION GUIDE

PackshotCompact

PACKAGE COMPOSITION



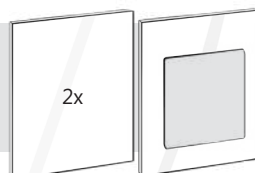
PackshotCompact
lightbox



2 camera mount
sponges



Product Registration Sheet
& Quick Reference Guide



3 acrylic panels



1 power cable



Reflective door
covers



1 USB cable

© Sysnext. All rights reserved.

This material is not to be interpreted as a guarantee of earnings and may not be copied, reproduced, modified, published, uploaded, posted or distributed in any way, without PackshotCreator's prior consent.

PackshotCompact

SPECIFICATIONS

Dimension (L x W x H): 100cm x 100cm x 120cm

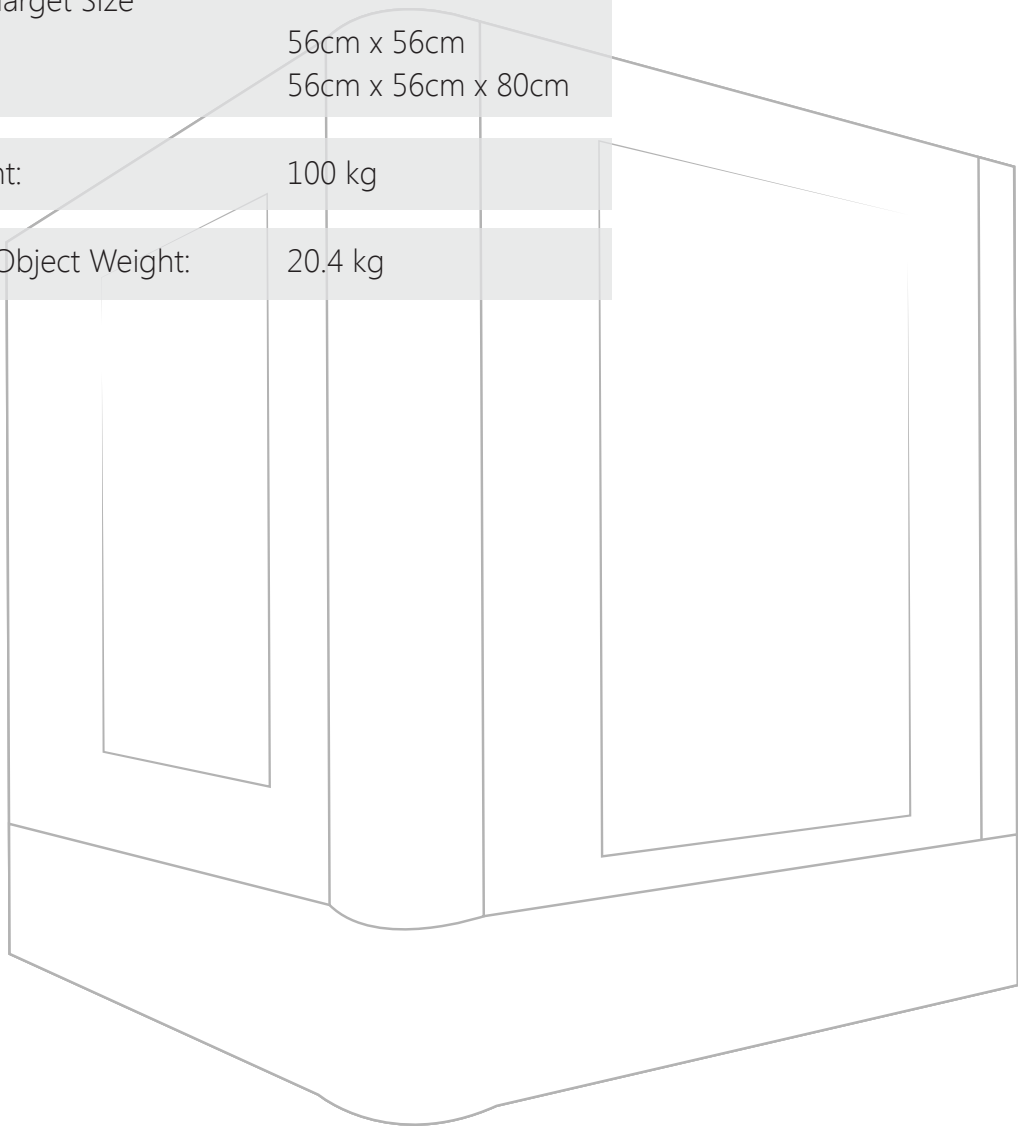
Maximum Target Size

Top Shots: 56cm x 56cm

Side Shots: 56cm x 56cm x 80cm

Total Weight: 100 kg

Maximum Object Weight: 20.4 kg



CONTACT INFO:

Email: help@packshot-creator.com

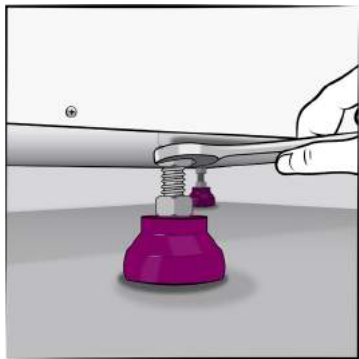
Website: <http://esupport.packshot-creator.com>

PackshotCompact

SYSTEM PLACEMENT

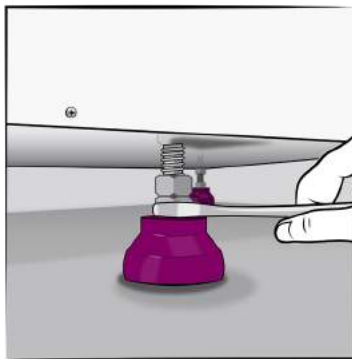
ROLLING THE UNIT:

01



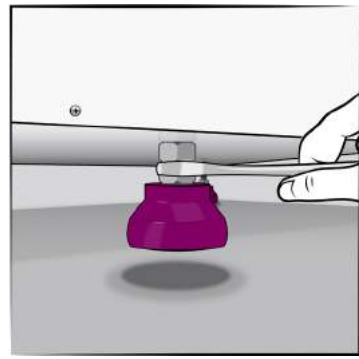
Use the #24 wrench to adjust leg height. Start by loosening the top nut.

02



Rotate the bottom nut to raise or lower the leg.

03



When all legs are up, roll the unit into position. Lower the legs, balance the unit, then re-tighten the top nut against the bottom of the unit.

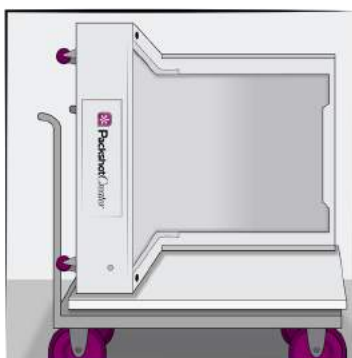
GUIDING THE UNIT THROUGH A DOORWAY:

01



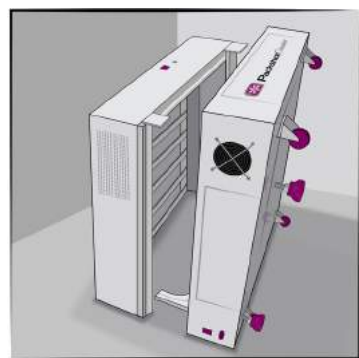
If the doorway is less than 114 cm wide, you will need to remove the top, two side walls, acrylic panels if any, front door and two front light columns to get the unit through the door. See detailed disassembly instructions in the "Hardware Disassembly" part of this document.

02



Get a dolly. Place a piece of foam on top. Place the system on its side on the dolly / foam. Lift and guide / curve the unit through the doorway.

03



(Optional): You can further separate the back and bottom light panels to get the unit through the doorway more easily. See detailed disassembly instructions in the "Curved Background Removal" and "Back and Bottom Light Panels Separation" of the "Hardware Disassembly" part of this document.

PackshotCompact

SYSTEM PLACEMENT

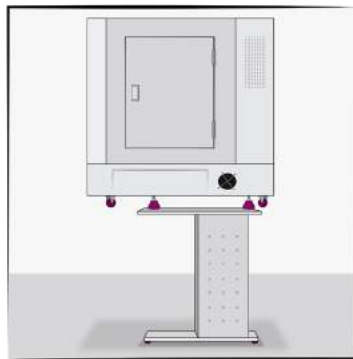
PLACEMENT:

01



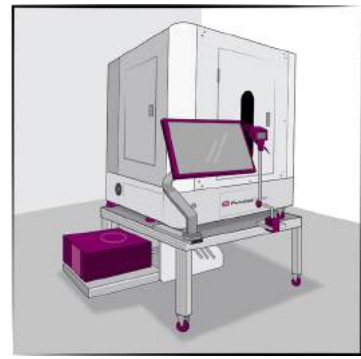
Place the system on the floor. Make sure the system is level and legs are locked into position.

02



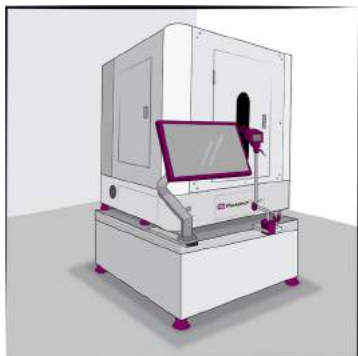
(Optional): Place the system on an PackshotCreator ErgoTable (sold separately).

03



(Optional): Place the system on an PackshotCreator ErgoTable+ (sold separately).

04



(Optional): Place the system on an PackshotCreator Supporting Box (sold separately).

05



Any external lighting, such as PackshotCreator LiveStudio light, can be used with the system when some or all of the top, two side walls, acrylic panels, front door and two front light columns are removed.

PackshotCompact

HARDWARE INSTALLATION

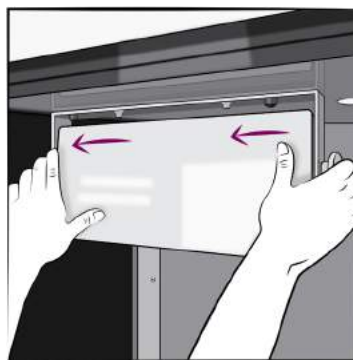
ACRYLIC PANEL INSTALLATION 1/2:

01



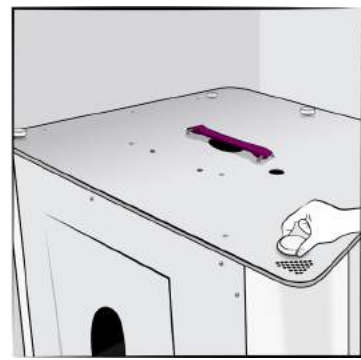
Remove the two white hand screws holding the top light panel to the top.

02



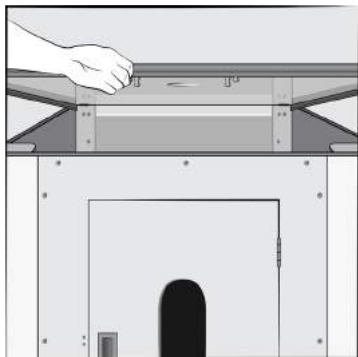
Remove the top light panel from the top by sliding it to the left and take it off with caution.

03



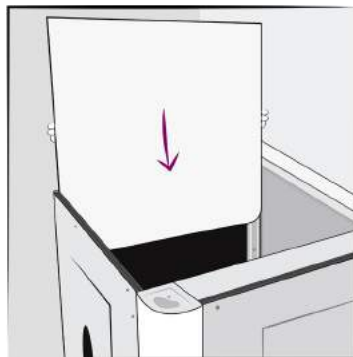
Remove the five white hand screws.

04



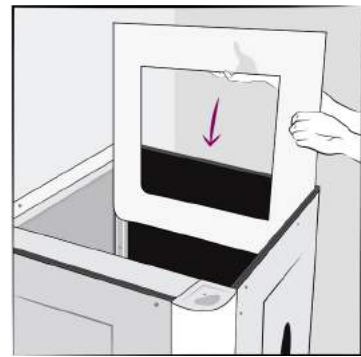
Remove the top.

05



Three acrylic panels come with the system - one solid, one with an opening at center and one with a small hole at bottom. Choose which two panels to use.

06



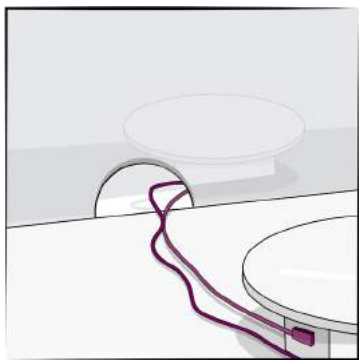
Place the one with an opening on either side for convenient side loading. Slide the panels in from the top through the two guide notches / cut outs in the holding bracket and front door.

PackshotCompact

HARDWARE INSTALLATION

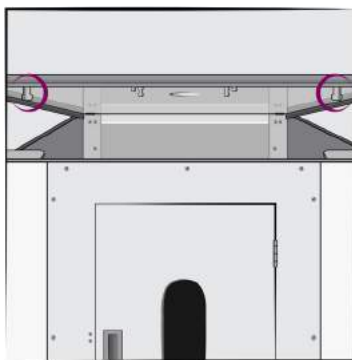
ACRYLIC PANEL INSTALLATION 2/2:

07



Note: Place the acrylic panel with a small hole at bottom on the left side when using a PackshotSpin O3T inside the PackshotCompact, so the power and USB cables can be strung through the small hole and then plugged into the power jack and USB port on the frame of the bottom light panel respectively.

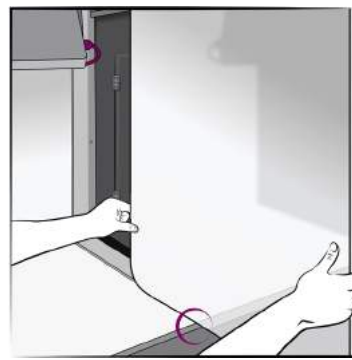
08



Reverse steps **01** to **04** to replace the top and top light.

Note: Align the acrylic panels between the metal guide brackets on the top, before tightening.

09



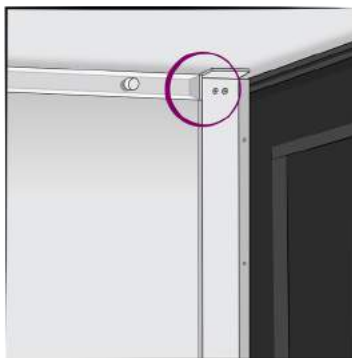
(Optional): The acrylic panels can also be installed through the front when the front door is detached. Insert the acrylic panels between the guide notch on the bottom.

10



Respectively insert the acrylic panels between the metal guide bracket on the top.

11



Finally slide the rest of the panel into the guide notch on the back wall holding bracket.

PackshotCompact

HARDWARE INSTALLATION

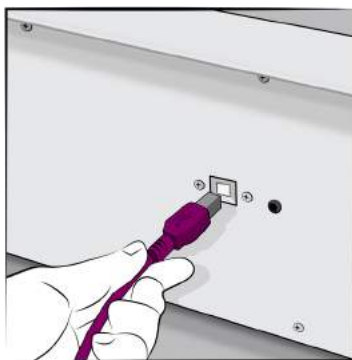
CABLE CONNECTION 1/2:

01



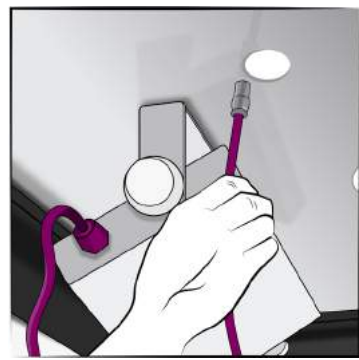
Plug one end of the power cable into the system and the other end into a power socket.

02



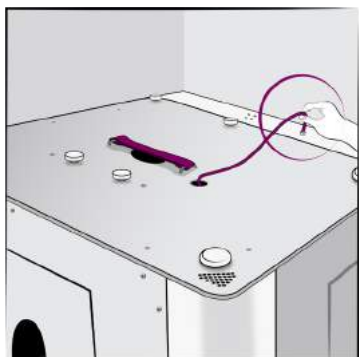
Plug one end of USB Type B cable into the system and the other end into a computer USB port.

03



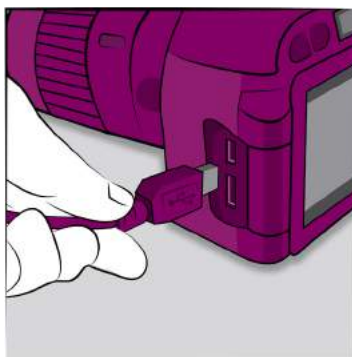
String the top light power cable through the ceiling hole.

04



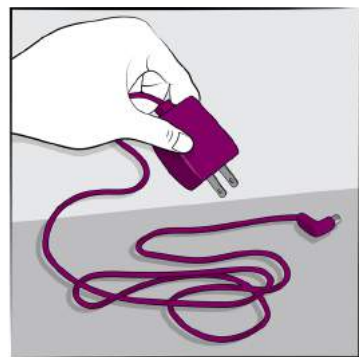
Plug it into the port on the top of the back light panel. Rotate clockwise to tighten.

05



Connect a compatible camera to your computer by USB.
(Optional): Instead of batteries, we recommend using an AC power adapter to power your camera.

06



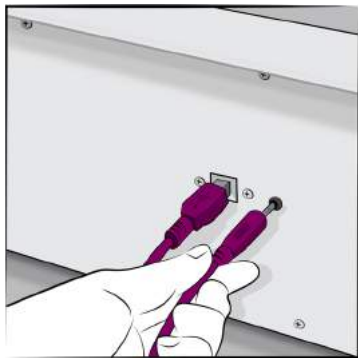
(Optional Connections): For almost all SLR cameras featuring remote capture capabilities, PackshotCompact can supply a custom shutter release cable to connect the camera to the system so software can automate image capture.

PackshotCompact

HARDWARE INSTALLATION

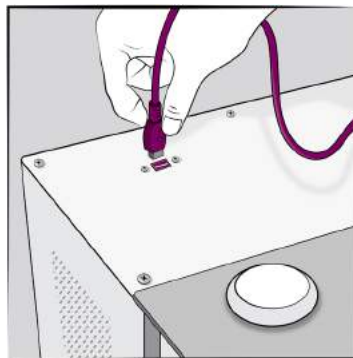
CABLE CONNECTION 2/2:

07



In this configuration, captured images are saved to the memory card.

08



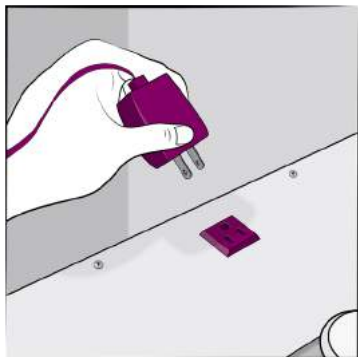
If you are using camera top shot, plug the USB cable from your camera to your computer directly, or into the USB port on the top of the back light panel first.

09



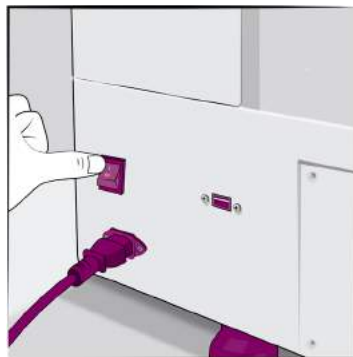
Respectively, plug one end of the USB Type A cable into the left side of the back light panel and the other end into your computer USB port.

10



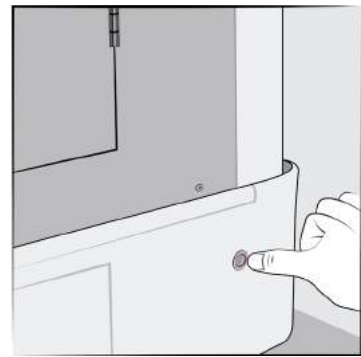
(Optional): If you are using AC power adapter, plug it into the power socket on the top of the back light panel.

11



Flip the system power switch on.

12



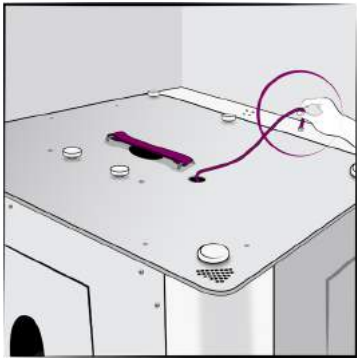
Press the metal button switch to turn on the system.

PackshotCompact

HARDWARE DISASSEMBLY

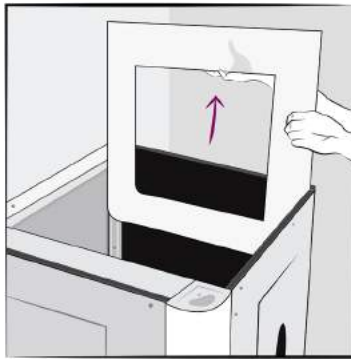
SURROUNDING COVERS REMOVAL:

01



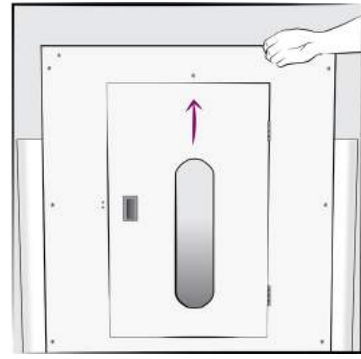
Unplug the studio and the top light power cable.

02



Follow instructions from steps **01** to **04** in the “Acrylic Panel Installation” part of this document to remove the top and top light, and then remove the acrylic panels if any.

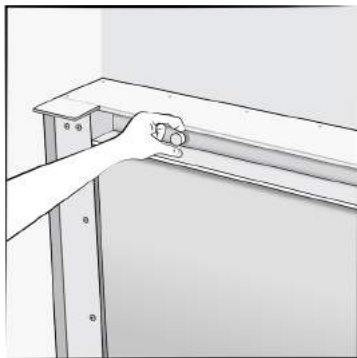
03



Lift to remove both side walls and front door.

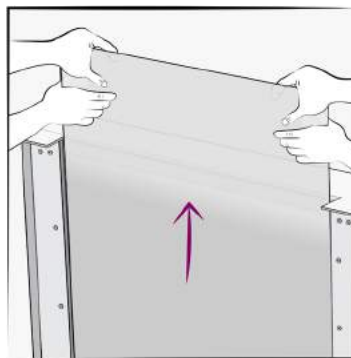
CURVED BACKGROUND REMOVAL:

01



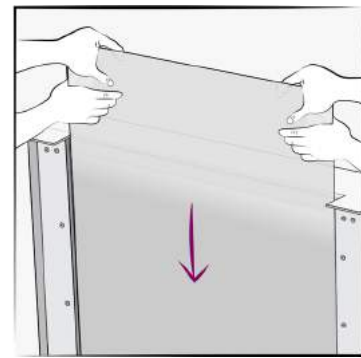
Remove two small white hand screws and the holding bracket on the top of the curved background.

02



Lift to remove the curved background from the system with two people at opposite sides.

03



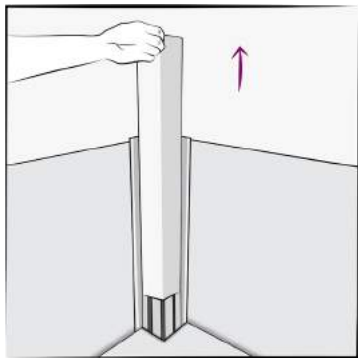
Note: When re-installing the curved background, we recommend to slide it down with two people at opposite sides. Use one hand to brace and guide the bottom corner into the curved rail and then press it down until it flush with the bottom background.

PackshotCompact

HARDWARE DISASSEMBLY

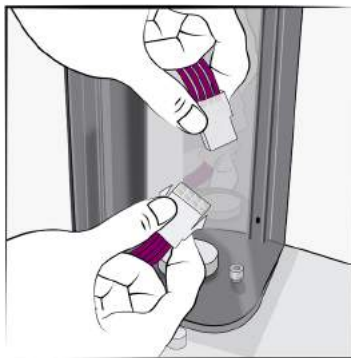
FRONT LIGHT COLUMNS REMOVAL:

01



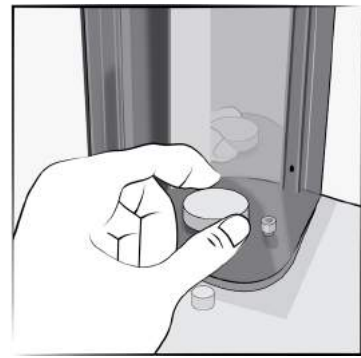
Lift to remove the diffusion plate.

02



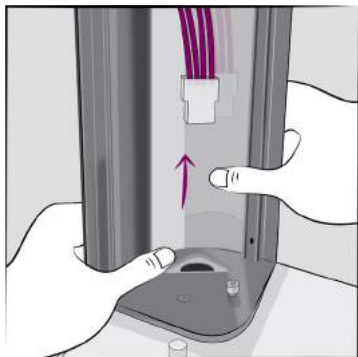
Disconnect the connector for the LED lamps.

03



Remove the hand screw.
Note: The hex socket button screws do not need to be removed.

04



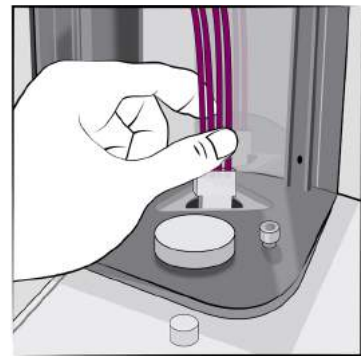
Lift to remove the column.

05



Note: When re-installing the columns, be sure to align the screw with the small corner hole.

06



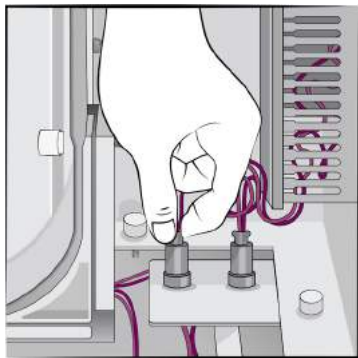
Then, tuck the connector and extra wire into the large hole.

PackshotCompact

HARDWARE DISASSEMBLY

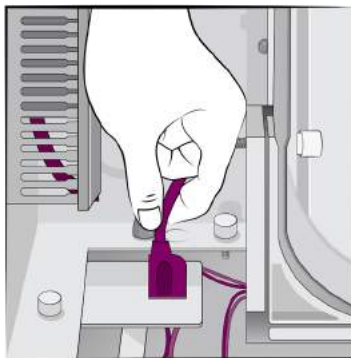
BACK AND BOTTOM LIGHT PANELS SEPARATION:

01



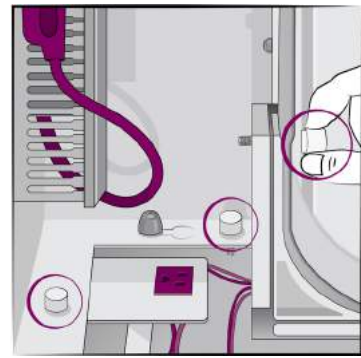
Unplug the two metal connectors.

02



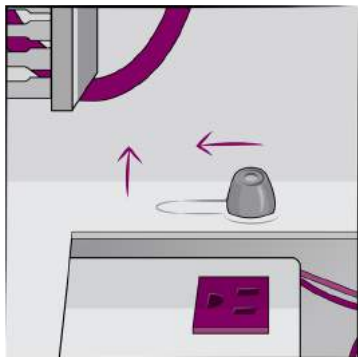
Unplug the power connector.

03



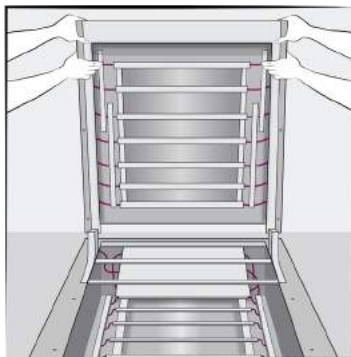
Remove six white hand screws, three on each side.

04



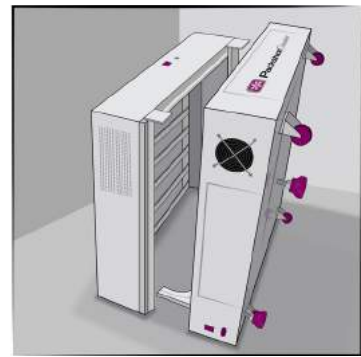
Slide the back light panel away from the two dowel screws, then lift up and separate completely from the bottom light panel.

05



Note: The back light panel is very heavy, recommend 2-4 people.

06



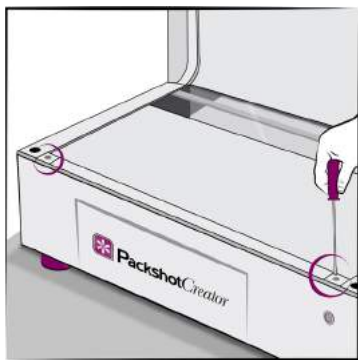
Once the two panels are separated, you can slide the bottom background backward and lay the bottom light panel vertically, so as to move them individually through small spaces. Reverse steps **01** to **05** to reattach the two light panels.

PackshotCompact

HARDWARE DISASSEMBLY

BOTTOM GLASS PLATE REMOVAL:

01



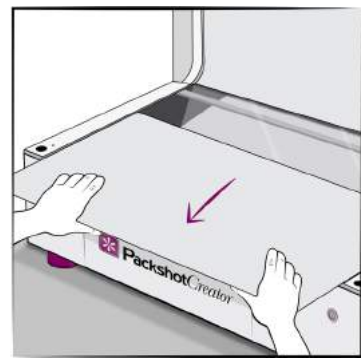
Use a Phillips screwdriver to remove two screws and the holding bracket on the front end of the bottom background.

02



Remove the holding bracket.

03



Slide to remove the bottom background and glass plate from the system.